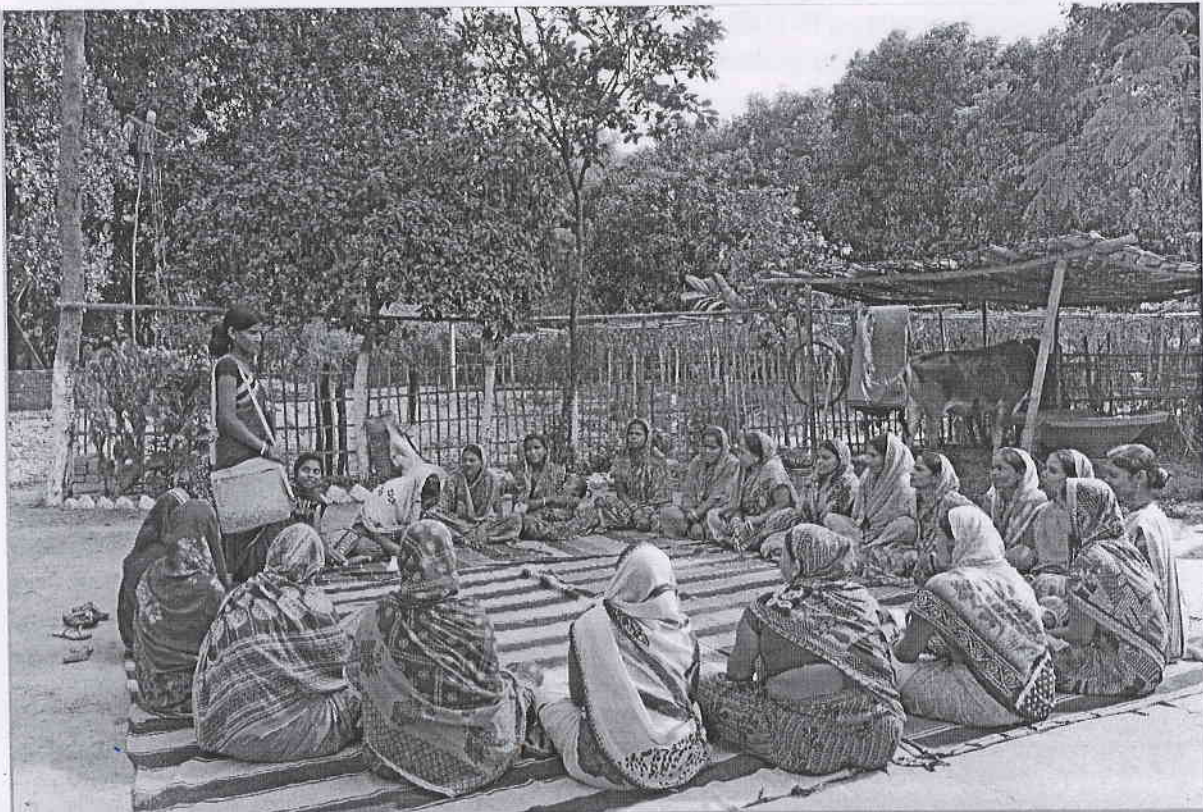




ROSHNI

Centre of Women Collectives led Social Action,
Lady Irwin College, University of Delhi



**Bethak 1: Strengthening “Gender” Component in the Swabhimaan
Programme Impact Evaluation Sites
Listening & Thinking with Experts**

18 and 19 March, 2019 (Monday and Tuesday)

Venue: Department of Development Communication & Extension, Lady Irwin College, New Delhi

About ROSHNI- Centre of Women collectives led Social Action (CWCSA)

Roshni- Centre of Women collectives led Social Action, established in 2018 is a national level technical support unit for Deendayal Antyodaya Yojana -National Rural Livelihoods Mission (DAY-NRLM). It is embedded in the Department of Development Communication and Extension, Lady Irwin College, New Delhi. UNICEF provides technical and financial support to the Roshni Centre. It works with women collectives to bring about a social action on food, nutrition, health and WASH (FNHW) interventions. It serves as a knowledge base and capacity building unit for scaling-up DAY-NRLM committed activities.

Bethak 1: Strengthening “Gender” Component in the Swabhimaan Programme Impact Evaluation Sites

Listening & Thinking with Experts

Bethak 1: Strengthening “Gender” Component in the Swabhimaan Programme Impact Evaluation Sites: Listening and Think with Experts is being organized by Roshni-Centre of Women Collectives led Social Action (CWCSA), on March 18 and 19, 2019 at the Department of Development Communication and Extension, Lady Irwin College, University of Delhi, as a platform for all the participants to share their work in the field of gender inclusion, sensitisation and gender justice, with the aim to gain a better understanding of their work and ideate on

Expected outcomes of the Workshop

- Experience sharing by different organisations working in the area of gender
- Review of Swabhimaan resource materials
- Identifying scope for strengthening the programme through robust layering of gender
- Arriving at a practical plan for strengthening Swabhimaan programme
- Role Allocation